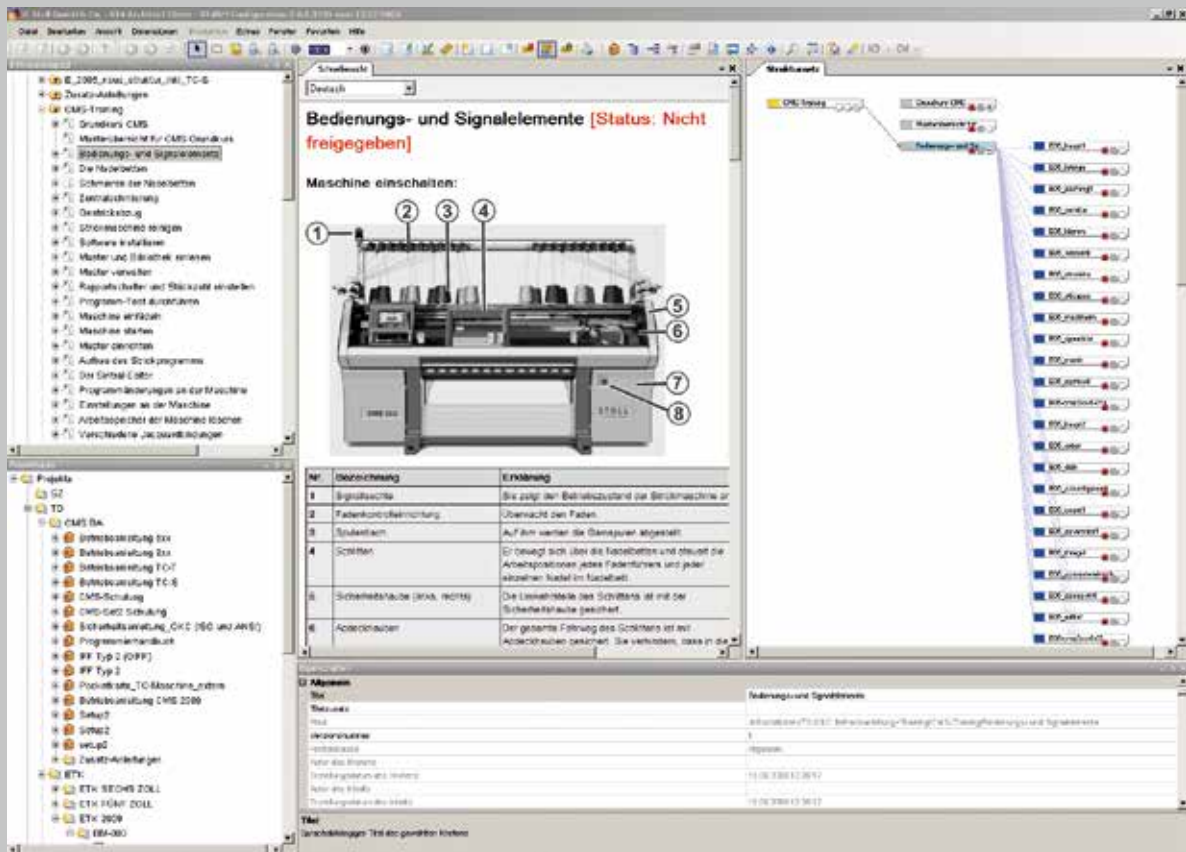




# H. STOLL GMBH & CO. KG RELIES ON SCHEMA

Founded in 1873, H. Stoll GmbH & Co. KG in Reutlingen develops and produces flat knitting machines and patterning software for the creation of knitted textiles and is represented in over 70 countries by affiliates, subsidiaries, sales and service centers, and agencies. The Stoll product suite is comprised of four classes of flat knitting machines with an integrated modular concept, as well as pattern preparation systems. The midsize enterprise H. Stoll pays close attention to ergonomic usage, integration possibilities and compatibility between machines, as well as unified integration with pattern preparation systems. Documentation of the product program and its range of applications are important parts of H. Stoll's customer service.



## THE SUCCESS STORY OF H. STOLL

**Stoll machines are in use in over 70 countries. With more than 1000 employees worldwide, production of their flat knitting machines and patterning software concentrated in Germany, and with their own collection and comprehensive service program, H. Stoll is a market leader in their area. The company creates its documentation for machines and software with the editing system SCHEMA ST4.**

The editing team of H. Stoll GmbH & Co. KG is also kept busy with tasks that include the creation of user manuals, service guides, spare parts catalogs, programming manuals, online help for knitting machines and patterning software, and an FAQ system.

In order to create efficiently such varied documentation, this family-owned business began to look for a new editing system. At first documentation for their machines was created with the editing system Schema-Text, a precursor to SCHEMA ST4. A substantial portion of the existing documents had already been reworked by using Funktionsdesign®, a systematic approach to structuring technical documentation.

Convinced by essential improvements to the successor product the SCHEMA ST4, implemented by the Nürnberg software manufacturer SCHEMA, H. Stoll decided to upgrade. Comparing SCHEMA ST4 with other systems made the decision easy, since SCHEMA ST4 was the only editing system able to meet all of H. Stoll's basic requirements: single source, efficient management of information modules, central translation mechanisms and flexible configuration.

Switching systems was simple. The only consulting and services needed were the migration of existing documents to the new system, and customization to enable support for Funktionsdesign. Existing processes could largely be left unchanged.

Preliminary work prior to introducing SCHEMA ST4 was kept to a minimum; terminology management already existed, and existing data was gradually modularized and integrated into the new system. "From the start, users were involved in the system implementation," said Georg Heß, chief editor at Stoll. "I can recommend this approach to any editing team leader. It prevents mistakes



*H. Stoll GmbH & Co. KG Headquarter, Reutlingen*

up front, and the system is quickly accepted by the users." Right before the switchover, employees were given extensive startup training and thus optimally prepared. The advantages of the new system were easily apparent.

The new editing system ensures more efficient processes by enabling the team to work on additional product variants with the same amount of resources.

The modular translation management makes it possible for documents to be transferred to their respective target languages more cost effectively. Since documentation is created in as many as 20 languages, this factor cannot be overestimated.

"SCHEMA ST4 helps us continue to expand our publishing work," comments chief editor Georg Heß. Additional documents will gradually be added. Training material, for example, will now be created with the help of the editing team.

#### STOLL USES THE FOLLOWING FEATURES OF SCHEMA ST4

- **Organization and structuring based on modeling with DocuManager according to Funktionsdesign®**
- **Production of PDF, RTF, MIF, HTML and CHM**
- **Translation management for 20 languages**
- **Use of the API for configuration**

#### PROJEKT- HIGHLIGHTS

- **Form types:**  
user manuals, spare parts catalogs, online help, FAQs, training material
- **Output format:**  
PDF, FrameMaker, Word, HTML, HTMLHelp
- **Quantity structure:**  
ca. 30 type-series instructions with annually several new publications
- **Languages:**  
European languages, Chinese, Japanese, Korean, Russian, Turkish
- **Structuring method:**  
Functional design

## **SCHEMA – Complex Documents Made Easy.**

SCHEMA GmbH was founded in 1995 in Nürnberg and today has around 100 employees.

SCHEMA ST4 is an XML-based editing and content management system, offering extensive features for all aspects of the creation, management, translation, quality management, publication and distribution of product information of any kind. SCHEMA ST4's scalability makes it suitable for small editing teams as well as for company-wide solutions for information logistics. SCHEMA ST4 can be used as a standard product or a customer-specific solution. With the SCHEMA Content Delivery Server, information can be distributed intelligently to all common platforms, independently of SCHEMA ST4.

Our products and solutions are successfully deployed across various branches of industry to simplify 'complex documents,' including technical documentation, software documentation and help systems, catalogs, labeling for pharmaceutical companies, training material, solutions for specialized publishers, contract and bid management. SCHEMA ST4 is based on Microsoft .NET technology with Windows and web clients, and can easily be integrated and deployed into modern IT landscapes, as it supports the entire bandwidth of documentation standards (XML, XSL:FO, DITA, etc.). SCHEMA ST4 offers a broad line-up of interfaces (XML editors, MS Office, Adobe CS & FrameMaker, SAP, etc.). SCHEMA is proud to be part of an active network of renowned partners, as this enables SCHEMA to offer specialized solutions for its customers as well.

Among the many customers already using solutions based on SCHEMA ST4 are: ABB, Agilent, Avaloq, Bosch, Boehringer Ingelheim, Bundesanzeiger, Carl Zeiss, Daimler, Deutsche Bundesbank, General Electric, Hewlett Packard, Lindauer DORNIER, MAN, Miele, Reifenhäuser, Roche Diagnostics, Schaeffler Gruppe, Siemens, Österreichische Bundesbahnen, Philips, STOLL, T-Systems, Voith and Wolffkran, and many more.

**For more information:**  
[www.schema.de](http://www.schema.de) · [www.blog.schema.de](http://www.blog.schema.de)

